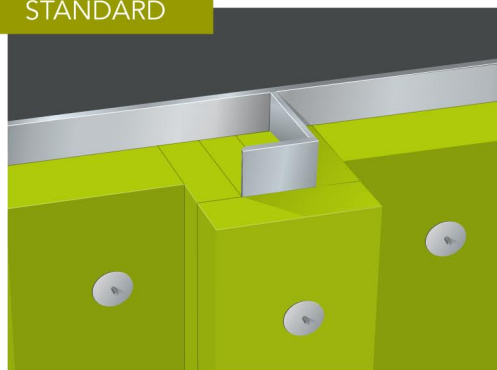


STANDARD



MED B-00002HT

A-60 Steel Bulkhead restricted

	Product	Thickness	Density	Weight
Plate	SeaRox SL 620	40 mm	100 kg/m ³	4.0 kg/m ²
Stiffener	SeaRox SL 620	25 mm	100 kg/m ³	2.5 kg/m ²

Construction notes:

- Stiffeners insulated with min. 25 mm SeaRox SL 620.
- Plate between stiffeners insulated with min. 40 mm SeaRox SL 620.
- Ø 3 mm pins fixed with max. 300 mm distance.
- Insulation secured with Ø 30-38 mm spring washers.





Application notes:

- Restricted application (fire against insulated side).
- All connections must be tight.
- The pins should exceed the insulation by approx. 10 mm.
- Insulation can be placed on either side of the steel plate.
- Alternative pin and stiffener design acc. to certificates.

Optional surface (on request):

- Reinforced aluminium foil
- Glass cloth

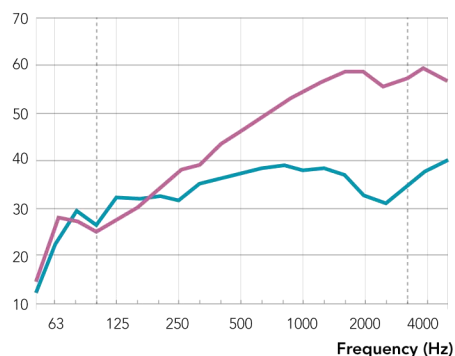
Advantages:

-  Ensures highest fire safety on board
-  Secures excellent noise reduction and better comfort
-  Lowest water absorption - optimal insulation performance
-  Thin solution to maximize available space

Sound reduction:

f	R
Frequency	1/3 Octave
Hz	dB
50	14.5
63	27.7
80	27.2
100	25.5
125	27.7
160	30.0
200	34.2
250	38.0
315	39.2
400	43.1
500	46.1
630	48.8
800	51.9
1000	54.3
1250	56.4
1600	58.3
2000	58.5
2500	55.6
3150	56.8
4000	59.0
5000	57.1

Sound Insulation, R (dB)



■ Test set-up: Plate: SeaRox SL 620, 40 mm
Stiffener: SeaRox SL 620, 25 mm

■ Steel Bulkhead 1500 / 1880 / 6 mm
Bulb profiles, 1820 / 140 / 10 mm
(without insulation)

$$R_w(C;C_{tr}) = 48 (-2; -7) \text{ dB}$$

Sound absorption:

Weighted sound absorption: **SeaRox SL 620, 40 mm**, $\alpha_w = 0.80$

Construction details

