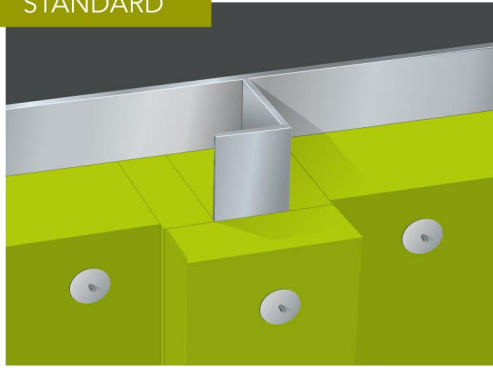


STANDARD

MED B-00002HN

A-60 Steel Bulkhead



| | Product | Thickness | Density | Weight |
|------------------|---------------|-----------|-----------------------|-----------------------|
| Plate | SeaRox SL 620 | 60 mm | 100 kg/m ³ | 6.0 kg/m ² |
| Stiffener | SeaRox SL 620 | 25 mm | 100 kg/m ³ | 2.5 kg/m ² |

Construction notes:

- Stiffeners insulated with min. 25 mm SeaRox SL 620.
- Plate between stiffeners insulated with min. 60 mm SeaRox SL 620.
- Ø 3 mm pins fixed with max. 300 mm distance.
- Insulation secured with Ø 30-38 mm spring washers.

Application notes:

- All connections must be tight.
- The pins should exceed the insulation by approx. 10 mm.
- Insulation can be placed on either side of the steel plate.
- Alternative pin and stiffener design acc. to certificates.

Optional surface (on request):

- Reinforced aluminium foil
- Glass cloth

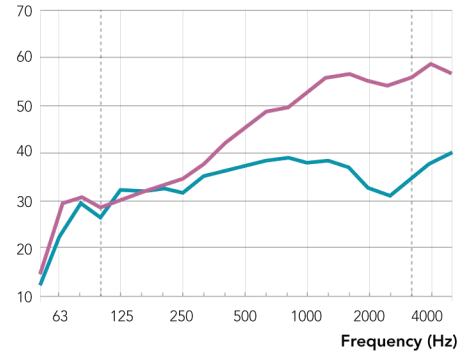
Advantages:

- Ensures highest fire safety on board
- Secures excellent noise reduction and better comfort
- Lowest water absorption - optimal insulation performance
- Thin solution to maximize available space

Sound reduction:

| f | R |
|-----------|------------|
| Frequency | 1/3 Octave |
| Hz | dB |
| 50 | 14.3 |
| 63 | 29.1 |
| 80 | 30.8 |
| 100 | 28.2 |
| 125 | 30.4 |
| 160 | 31.4 |
| 200 | 33.0 |
| 250 | 34.7 |
| 315 | 38.3 |
| 400 | 42.3 |
| 500 | 45.0 |
| 630 | 48.9 |
| 800 | 49.7 |
| 1000 | 52.7 |
| 1250 | 56.3 |
| 1600 | 57.1 |
| 2000 | 55.3 |
| 2500 | 54.3 |
| 3150 | 55.3 |
| 4000 | 59.0 |
| 5000 | 57.2 |

Sound Insulation, R (dB)



■ Test set-up: Plate: SeaRox SL 620, 60 mm
Stiffener: SeaRox SL 620, 25 mm

■ Steel Bulkhead 1500 / 1880 / 6 mm
Bulb profiles, 1820 / 140 / 10 mm
(without insulation)

$$R_w(C;C_{tr}) = 48 (-2; -7) \text{ dB}$$

Sound absorption:

Weighted sound absorption: SeaRox SL 620, 60 mm, $\alpha_w = 0.90$

Construction details

